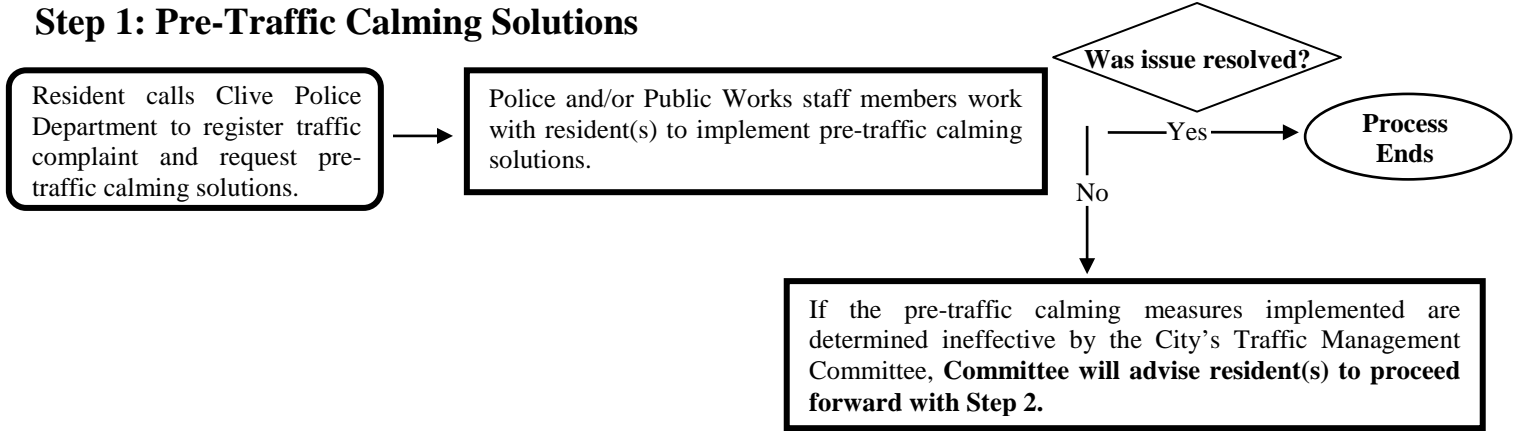
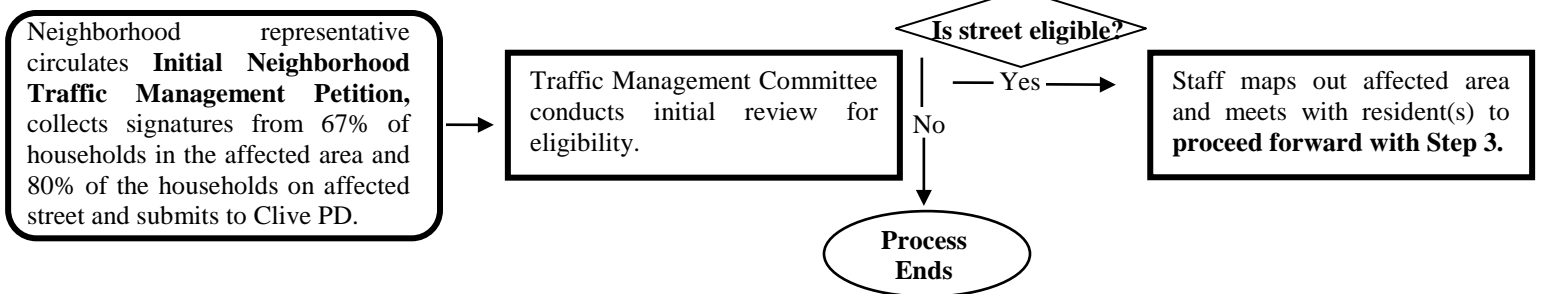


Neighborhood Traffic Management Program Flowchart

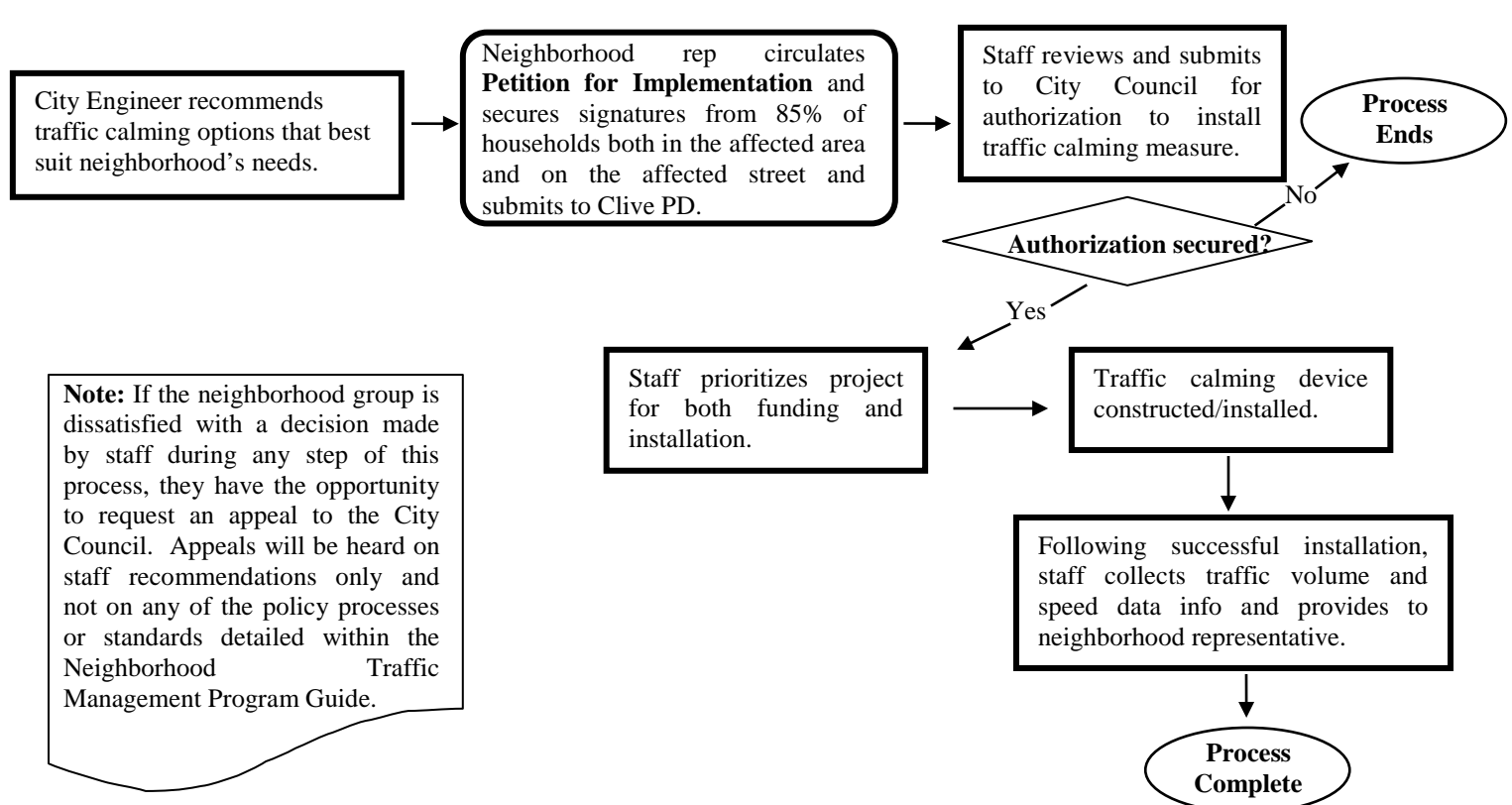
Step 1: Pre-Traffic Calming Solutions



Step 2: Engineering and Study Process



Step 3: Design and Implementation Process



Note: If the neighborhood group is dissatisfied with a decision made by staff during any step of this process, they have the opportunity to request an appeal to the City Council. Appeals will be heard on staff recommendations only and not on any of the policy processes or standards detailed within the Neighborhood Traffic Management Program Guide.